

# RADAR™ CLIMAPLUS™



Radar Panels with ClimaPlus Performance / DONN DX Suspension System

## FEATURES AND BENEFITS

- Non-directional pattern
- ClimaPlus™ 30-year lifetime system warranty to withstand conditions up to 49°C (120°F)/99% relative humidity without visible sag when used with a DONN® Brand suspension system

## APPLICATIONS

- Schools
- Corridors
- Lobby areas
- Offices
- Retail stores

## SUBSTRATE

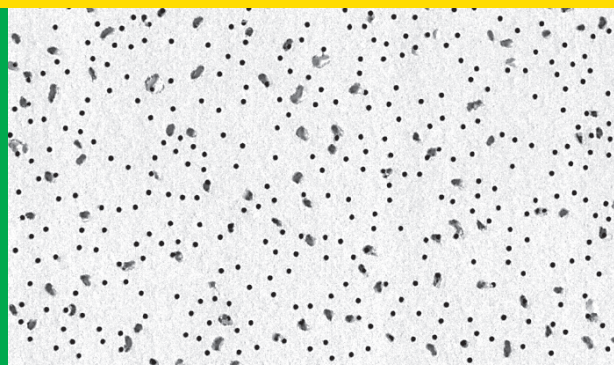
- Water-felted mineral fiber

## COLOUR SELECTION

□ Flat White (Item No. 050)

■ Flat Black (Item No. 205)

Lightly textured panel





RADAR CLIMAPLUS  
PANELS

Edge	Panel Size <sup>3</sup>	Class	Item No.	NRC	CAC Min.	LR <sup>2</sup>	Color	Grid Options	VOC Emissions	Anti-Mold & Mildew	Recycled Content <sup>1</sup>
SQ 	<b>2 x 2 x 5/8"</b> 600 x 600 x 16mm	Class A	<b>2210</b> ME2210	.60	33	.84	White	A, B,	Low		28 - 45%
	<b>2 x 4 x 5/8"</b> 600 x 1200 x 16mm	Class A	<b>2410</b> ME2410	.60	34	.84	White	A	Low		28 - 45%
	<b>2 x 4 x 5/8"</b> 600 x 1200 x 16mm	Class A	<b>2410205</b> ME2410205	.60	34	.84	Black	A	Low		28 - 45%
SLT 	<b>2 x 2 x 5/8"</b> 600 x 600 x 16mm	Class A	<b>2220</b> ME2220	.60	33	.84	White	C	Low		28 - 45%
	<b>2 x 4 x 5/8"</b> 600 x 1200 x 16mm	Class A	<b>2420</b> ME2420	.60	34	.84	White	C	Low		28 - 45%
FLB 	<b>2 x 2 x 5/8"</b> 600 x 600 x 16mm	Class A	<b>2230</b> ME2230	.60	33	.84	White	D, E,	Low		28 - 45%
	<b>2 x 4 x 5/8"</b> 600 x 1200 x 16mm	Class A	<b>2430</b> ME2430	.60	34	.84	White	D, E,	Low		28 - 45%

## LEGEND

## Low Emission (VOC Class)

Meets the emission test criteria as low-emitting prescribed by the Singapore Green Building Council (SGBC) following ASTM D5116-06 testing methods

## ClimaPlus Superior Performance

Contains a broad-spectrum antimicrobial additive on the face and back of the panel that provides resistance against the growth of mold and mildew.

GRID PROFILE  
OPTIONS

A DX®	B Centricitee™ DXT™	C DX®	D Centricitee™ DXT™	F Fineline® 1/4" DXF™

**Short Specification:**

- Ceiling system shall comprise USG Radar™ CLIMAPLUS™ high humidity / fire resistant acoustical ceiling panels in (DONN Centricitee 15mm [9/16"] / DONN DX 24mm [15/16"] / DONN Fineline 15mm [9/16"] exposed grid including wall trim as manufactured by USG Boral.
- Panels shall have NRC 0.55.
- Panels shall have CAC 33-34.
- Nominal size (600mm x 600mm / 600mm x 1200mm) x 16mm / (2' x 2' / 2' x 4') x 5/8").
- Edge detail shall be (Fineline bevel [FLB] / Shadowline Tapered [SLT] / Square edge [SQ]).
- Limiting Conditions - Maximum 49°C (120°F)/99% RH.

PHYSICAL DATA/  
FOOTNOTES

**Weight**

4.0 kg/m<sup>2</sup>
**Environmental Limitations**

49°C, 99% RH max.

**Maximum Backloading**

0 kg/m<sup>2</sup>
**Maintenance**

Can be cleaned easily with a soft brush or vacuum.

**Proprietary technology**

This product's unique combination of sag resistance and sound performance results from proprietary technology.

**Installation**

Shall not begin until the building is fully enclosed, watertight, dry, permanent heating and cooling equipment is in operation, residual moisture from wet trades (eg. terrazzo, concrete, plaster) has dissipated, and is free of chemical fumes. Do not mix production lots in the same ceiling area.

**Footnotes**

- Not all panel sizes available in all geographic areas
- Some imperial sizes available to order
- Acoustic Test Standards NRC to ASTM C423 CAC to ASTM E1414
- LR values are shown as averages

**Reaction to Fire**

Standard	Flame Spread	Smoke Developed
ASTM E84	<25	<50
AS/NZS 3837	Group 1 - sprinklered	
ISO 5650 Parts 1 & 2	Group Number Classification: 1 - S	



Manufactured, sold or distributed by USG Boral Building Products or one or more of its affiliates.

The trademarks CENTRICITEE, CLIMAPLUS, DONN, DX, DXF, DXT, FINELINE, RADAR are trademarks of USG Interiors LLC. INNOVATION INSPIRED BY YOU is a trademark of USG Boral Building Products or one or more of its affiliates.

Safety First! Follow good safety/industrial hygiene practices during installation. Wear appropriate personal protective equipment. Read SDS and literature before specification and installation.

